

Hillel and Yoel Aloni-75 Jubilee Tourney

34 studies by 17 composers from 13 countries took part in this competition. Several mishaps unfortunately somewhat clouded the event: Six works (about 18%!) were immediately disqualified as the composers neglected to pay attention to the thematic requirements, and did not submit twin-positions. A computer-communication problem caused a considerable delay in producing the award. The pair of judges differed widely regarding the evaluation of the works' quality, which illustrated for the umpteenth time, the shortcomings of the rating system used to judge candidates for Fide Albums...

Excluding one outstanding work, the rest of the submitted pieces were a bit disappointing. After careful consideration and necessary investigations, we asserted that only 6 studies met the criteria which justify inclusion in the award (another study, N. 5 by Zinar, was found to be anticipated by works of the composer; e.g. Davranyan & Zinar, Kf3/Kb6 1988); In fact, it was the one exceptional first prize, which kept the dignity of the tourney and its participants.

We thank heartily IM Yochanan Afek, who envisaged, initiated and organized the jubilee tourney; FM Amatzia Avni, who took care, as tourney director, of every detail; and Dutchman FM Harold van-der-Heijden, incomparable in the composition world, regarding high-quality and swift skills of checking soundness and originality.

Naturally, we also express our gratitude to all participants from around the world, who responded to the not-at-all-simple thematic challenge [*the theme was "a twin-study is required, created by just one change in the initial position. More than two phases are allowed but a zero-position is forbidden"*] and joined us in our jubilee celebration.

Cheers,

Hillel Aloni, international judge;

Yoel Aloni

August 2013, Netanya

Here follows our ranking:

1st Prize: Marco Campioli, Italy

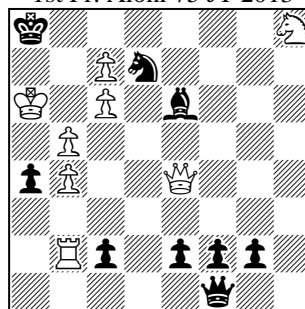
In this study (which bears resemblance to a more-mover), each piece has a defined role, while the juicy position is about to explode in artistic tactics.

White intends a mate in two (1.c:d7+), which forces black to defend energetically, starting with a knight sacrifice. As play continues, black promotions emerge, some of it ends by sacrificing the new queens to open up the position. On his ninth move white employs a new factor: 9.Ng6! ("you too, Bruknightus?"), when the fearless knight contributes towards mate-threats in a field full of queens! It is only at move 11 that the secret of this bold knight is revealed; sacrificing itself, together with the black knight sacrifice on the very first move, paves the path to force stalemate – a first in a series.

In the second phase, the white knight is placed at the heart of black's promotions system, but this time, due to its proximity to the main action, it starts its role – and ends it – already in the third move, disrupting black's defensive options. On the 14th move, a promoted phoenix-like white knight reappears, forcing a perpetual check!

The composer could have been contented with these twins, but he made a third phase: Once again, the white knight is on the board's margins, yet it assists in a dual avoidance and later on in stalemate prevention. It should be noted that white's grandiose winning move (12.Rd8!!) would have been meaningless, were it not for the presence of the white knight! The study reminds us the grand composing style of Gady Costeff...

Marco Campioli, Italy
1st Pr. Aloni 75 JT 2013



Draw B → 8+9
b) h8 → d1 c) h8 → b1

A) 1... ♖c5+! [1... ♗e5? 2.b6! e1=♔+ 3.b5+-] 2.bxc5 e1=♔ 3.♖h4! [3.♗d4? ♗c8+ 4.♖b6 ♖a5+! 5.♖xa5 g1=Q 6.♖b6 ♖a1+-] 3... ♗c8+ 4.♖b6 ♖a5+! [4... ♖a1? 5.♗d8+-] 5.♖xa5 c1=♔! [5...g1=♔? 6.♖b6 ♖a1 7.♖b4+-] 6.♗d8 ♖fe1+ 7.♖b6 [7.♖b4? ♖xb4+-] 7... ♖e6 8.♖b4 ♖a1 [8... ♖c2 9.♖h4 ♖eb3

10.♖xb3 ♖xb3 11.♗xf2 a3 12.♗f8! ♖h3! 13.♗d7 g1=♔ 14.♗d6 a2 15.♗xc8 ♖f5! 16.♖xf5 a1=♔ 17.♖f8=] 9.♗g6! [9.♗f7? f1=♔! 10.♗d6 g1=♔ 11.♗xc8 ♖xc5+-] 9...f1=♔ [9...g1=♔ 10.♗f8!]=] 10.♗f4! [10.♗f8? ♖xc6+!+-] 10...♖g4 [10...♖xc6+ 11.♖xc6! ♖f3+ 12.♗d5! ♖xd5+ 13.♖xd5 ♖a2+ 14.♖c4=] 11.♗e6 ♖xe6 12.♖xa4+! [12.♖xc8+? ♖xc8 13.♖xa4+ ♖a6+!+-] 12...♖xa4 13.♖xc8+ ♖xc8= stalemate

B) 1... ♖c5+! [1... ♗e5? 2.b6! e1=♔+ 3.b5+-] 2.bxc5 e1=♔ 3.♗e3! [3.♖xc2? g1=♔! 4.♖b6 ♖g4+-] 3...♖xe3! 4.♖xe3 ♖c4 5.♖xc2 [5.♗d2? ♗c8+! 6.♖b6 ♖xc5+! 7.♖xc5 c1=♔ +-] 5... ♗c8+ 6.♖b6 ♖xb5+! [6...♖xc2 7.♗d4 f1=♔ 8.♖xa4+ ♖xa4= stalemate] 7.♖xb5 f1=♔+ 8.♖c4 ♖b1+ [8...g1=♔ 9.♖xg1 ♗a6+! 10.♖xa6=] 9.♖b4 ♖f1+ 10.♖c4 ♖a7! 11.♖c3! [11.♖a3? ♗a6+-] 11... ♗a6+ 12.♖xa4 ♖d1+ 13.♖a3! g1=♔ 14.c8=♗+! [14.c8=♔? ♖a1+-] 14...♖a8! [14... ♗xc8? 15.♖a5+-] 15.♗b6+ ♖a7 [15...♖b8? 16.♖e5+-] 16.♗c8+= positional draw (perpetual check)

C) 1... ♖c5+! [1... ♗e5 2.b6! e1=♔+ 3.b5+-] 2.bxc5 e1=♔ 3.♖xa4 [3.♗d4? (♖f4?, ♖h4?) 3... ♗c8+ 4.♖b6 ♖a5+ 5.♖xa5 cxb1=♔=] 3...♖c4 4.♖xc4 c1=♔ 5.♗d4! [5.♖h4? ♗c8+ 6.♖b6 ♖xc5+ 7.♖xc5 ♖e5+ 8.♖b6 ♖e3+!+-] 5... ♗c8+ 6.♖b6 ♖a5+ 7.♖xa5 f1=♔ 8.♖b6! [8.♖h8? ♖fe1+ 9.♖b6 (9.♖b4 ♖xb4+=) 9... ♖xc5+-; 8.♗d8? ♖f5!+-] 8...♖fc4 9.♖xg2! [9.♖d2? ♖xc5+!+-] 9... ♖a3! 10.♗xa3 ♖xd4 11.♖g8 [11.♖a2? ♖a4!+-] 11...♖h8! 12.♖d8!+- [12.♖xh8?= stalemate]

1st Honor Mention: János Mikitovics, Hungary

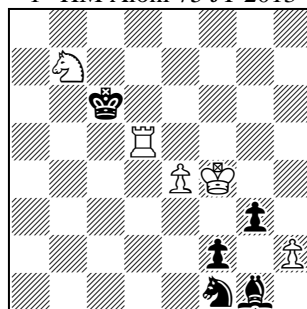
In both phases white must sacrifice his two pieces in a struggle to prevent a black promotion; but that is just an introduction. In phase A, a long and wonderfully precise contest occur between king and two pawns vs. king, bishop and knight, leading to a piquant ending when white is saved by promoting a pawn (which made an Excelsior!) to a knight.

In phase B, things are simpler; precision here lies in the thematic try on the first move (1.Ra5+?). The white rook maneuvers to prevent promotion and the white monarch forces a draw by double-threatening two pieces.

Finally, we didn't find it necessary to refer to the fact that in both phases, the resulting positions could be derived from a database.

A) 1.♖a5+! ♖c7 [1...♖b6 2.♖c4+=] 2.hxg3 ♖d2 [2...♖e3 3.♖c5+ ♖b6 4.♖c1=] 3.♖c5+ ♖b6 4.♖c1 ♖xa5 5.g4! [5.e5? f1=♖+ 6.♖xf1 ♖xf1 7.g4 ♖e3+--+] 5...f1=♖+ 6.♖xf1 ♖xf1 7.g5! ♖d2 [7...♖h2+ 8.♖f5!=] 8.e5! [8.♖e5? ♖f3+! (8...♖h2+? 9.♖f5 ♖f3 10.e5 ♖xe5 11.♖e4!=) 9.♖f4 ♖d4! (9...♖h4? 10.♖g4 ♖g6 11.♖f5 ♖h4+ 12.♖g4 positional draw) 10.g6 ♖h2+ 11.♖g5 ♖e5 12.♖h6 ♖e6 -+; 8.♖f5? ♖d4 9.e5 ♖c4+] 8...♖c4 [8...♖d4 9.e6 ♖c4 10.♖e4!= (10.e7? ♖d6-+)] 9.♖e4!! [9.♖f5? ♖d4=] 9...♖h2 [9...♖e3 10.g6= (10.♖f5? ♖d4-+)] 10.e6 ♖d6+ 11.♖d5 ♖b6 12.e7! ♖c7 13.g6 ♖d7 [13...♖e8 14.♖e6=] 14.g7 ♖e8 15.g8=♖!= Excelsior. 15.g8=Q? ♖f6-+-

János Mikitovics, Hungary
1st HM Aloni 75 JT 2013



Draw b) ♖c6→a4 5+5

B) 1.♖c5+! [Thematic try 1.♖a5+? ♖b3! (1...♖b4? 2.hxg3 ♖e3 3.♖a1 ♖c3 4.♖d6 ♖b2 5.♖f5 ♖xf5 6.♖f1=) 2.hxg3 ♖e3 3.♖c5+ ♖c3! 4.♖a1 ♖b2! 5.♖d3+ ♖xa1 6.♖xf2 ♖xf2 7.g4 ♖c4!! (7...♖b2? 8.e5! ♖c4 (8...♖d5+ 9.♖f5 ♖h4 10.g5 ♖e7+ 11.♖f6=) 9.e6 ♖c5 10.g5 ♖d6 11.♖e5 ♖e8 12.♖d5 ♖e7 13.♖c6 ♖xg5 14.e7! ♖xe7 (14...♖f6 15.♖d6=) 15.♖d7=) 8.e5 ♖d4 9.♖e4 ♖b2!! (9...♖c3? 10.♖d3=) 10.e6 (10.g5? ♖xe5!) 10...♖d6+ 11.♖d5 ♖c8 12.g5 ♖c1 13.g6 ♖e7+ 14.♖e5 ♖b2+!+ (14...♖g5? 15.g7! ♖b2 16.♖d6! ♖c3 17.♖d7 ♖d4 18.♖e8!=)] 1...♖a3 [1...♖b5 2.♖d3+! ♖c4 3.hxg3 (3.♖e5+? ♖b3! 4.♖d3+ ♖c2-+) 3...♖e3 4.♖xf2=] 2.♖d3+ ♖b4 3.♖xg3 ♖xc5 [3...♖xg3 4.♖d3+=] 4.♖c3+ ♖d4 5.♖c1 ♖e3 [5...♖d2 6.♖g3=; 5...♖xh2+ 6.♖f3=] 6.♖f3 f1=Q+ 7.♖xf1 ♖xf1 8.♖g2=

2nd Honor Mention: Peter Krug, Austria

Black's material advantage is enough to ensure victory. White will count on his passed e-pawn and threats on the back rank, but an immediate push of the pawn fails. In phase A, white overcomes the temptation to capture a knight, and takes the black pawn instead, using the weakness of black's back rank to win a piece, or alternatively to exchange rooks.

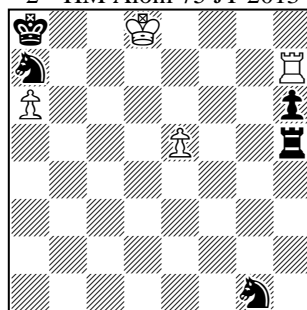
In phase B, the Nb1 turns out to be a vital aid for delivering mate to the white king, in tries on the first and on the fourth move. On the other hand, this very placement on b1 enables white to capture the knight, using the power of pa6.

In phase C, both thematic tries in the previous phases (1.Kc7) become the actual solution, while the former solutions turn out to be a try. In this phase, black is obliged to force a draw by perpetual check.

A) 1.♖c7 [1.♖d7? ♖b5 2.e6 ♖f3 3.e7 ♖e5 4.♖e6 ♖c7 -+; 1.e6? ♖d5+ 2.♖c7! ♖b5+ 3.♖c8 ♖d6+ 4.♖d7 ♖f5+ 5.♖e8 ♖f3 -+] 1...♖xe5 2.♖h8+ ♖c8 3.♖xh6 ♖e8 4.♖h5 [4.♖h4? ♖e2 5.♖b4 ♖a7 -+] 4...♖e2 [4...♖a7 5.♖b5 ♖f3 6.♖b7+ ♖a6 7.♖b8=] 4...♖f3 5.♖d5=] 5.♖d7 [5.♖d5? ♖f4 -+] 5...♖f8 6.♖e5 ♖d4 7.♖e8 =

Peter Krug, Austria

2nd HM Aloni 75 JT 2013



Draw 4+5

b) ♖g1→b1 c) ♖g1→f1

B) 1.♖c7 [1.♖d7? ♖b5 2.e6 ♖d5+ 3.♖c6 N1c3 4.e7 ♖d4+ 5.♖c7 ♖cb5+ 6.♖c8 ♖a7+ 7.♖c7 ♖e6+ 8.♖b6 ♖b5#] 1...♖xe5 2.♖h8+ ♖c8 3.♖xh6 ♖e8 4.♖d7 [Thematic try: 4.♖h3? ♖d2 5.♖d3 ♖c4 6.♖d8 ♖e7+ 7.♖c8 ♖b6#] 4...♖f8 5.♖c6 ♖b8 6.a7+ ♖xa7 7.♖b6+ =

C) 1.♖d7 [Thematic try: 1.♖c7? ♖xe5 2.♖h8+ ♖c8 3.♖xh6 ♖e8 4.♖h4 ♖a7 5.♖b4 ♖e3 6.♖b7+ ♖xa6 7.♖b8 ♖d5-+-] 1...♖b5 2.e6 ♖e3 3.e7 ♖d5+ 4.♖c6 ♖d4+ 5.♖c7 ♖e6+ 6.♖c6!= [not 6.♖c8? ♖c4 7.e8=♖ ♖b6#]

3rd Honor Mention: Pavel Arestov, Russia

Black's immediate threat, to mate in two (1...Qd2+ / Qa2+), dictates an energetic introductory play, which ends in queens exchange, loss of white pf6 and an ostensibly lost ending for white. Only the strained position of the white king makes it possible for his bishop to enforce a classic stalemate. There is an interesting symmetry between the two phases, as the white bishop "plays" on two parallel ladders, including two self-sacrifices which cannot be accepted because of a resulted theoretical drawing position.

Another point of interest is the precise play of the white king.

In van-der-Heijden's view, this matrix is better expressed in a study with two main lines, rather than a twin study, and we concur.

A) 1. ♖g6! [1. ♖g8? ♗d2+ 2. ♖h1 ♗e1! -+] ♗d2+ 2. ♖h1! [2. ♖g1? ♗f2+ 3. ♖h1 ♖g2+ 4. ♖h2 ♗h4+ 5. ♖g1 ♗e1+ -+] ♖g2+ 3. ♖h2 ♖f1+ 4. ♖h1 ♗g2+! 5. ♗xg2+ ♖xg2+ 6. ♖g1! [6. ♖h2? ♖xf6 -+] ♖xf6 7. e7! [7. ♖d6? ♖h3! 8. e7 ♖d7 -+] ♖xe7 8. ♖d6! ♖d8 9. ♖c7! ♖f6 10. ♖e5! ♖g5 11. ♖f4! ♖h4 [11...♗xf4 12. ♖xg2 =] 12. ♖g3! ♖e7 13. ♖d6 ♖xd6 - Stalemate.

B) 1. ♖g6! [1. ♖g8? ♗d2+! 2. ♖g1 ♖c4 3. ♖g6 ♗e1+ 4. ♖h2 ♗e5+ 5. ♖g1 ♗a1+ 6. ♖h2 ♗a2+ 7. ♖h1 ♖d5! -+; 2. ♖h1 ♖g2+ 3. ♖h2 ♗f4+ 4. ♖g1 ♗d1+ 5. ♖h2 ♗h1x] 1...♗a2+! (1...♗d2+ 2. ♖g1! =) 2. ♖h1! (2. ♖g1? ♗xa7+ 3. ♖xf1 ♗f2#] ♖g2+ 3. ♖h2 ♖f1+ 4. ♖h1 ♗g2+! 5. ♗xg2 ♖xg2+ 6. ♖h2! [6. ♖g1? ♖xf6 -+] ♖xf6 7. e7! [7. ♖c5? ♖f1! 8. e7 ♖b5 -+] ♖xe7 8. ♖c5! ♖d8 9. ♖b6! ♖f6 10. ♖d4! ♖g5 11. ♖e3! ♖h4 12. ♖f2! ♖e7 13. ♖c5 ♖xc5 - Stalemate

1st Commendation: Marco Campioli, Italy

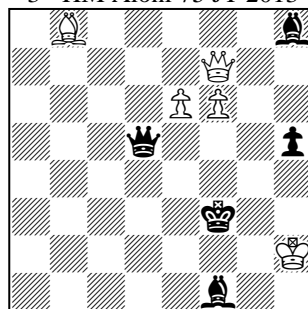
White's material advantage is largely a mirage. In addition to having both his rooks under attack, the black pawn phalanx on the king's flank poses a serious threat. In the play, it transpires that in all three phases black succeeds to promote a queen, yet white manages to save himself with correct counter play.

A) 1. ♖c3+! [1. ♖c1+? ♖d8 2. ♖hh1 f3 3.h5 ♖xd6 4.h6 ♖xh6!-+] ♖d8 2. ♖xf4 ♖d2+! [2...♖xd6 3. ♖e3=] 3. ♖a3 ♖xd6 4. ♖e3! [4. ♖f8+? ♖e7 5. ♖e3 ♖d3+! 6. ♖xd3 e1=♗-+] 4...♖d3+ 5. ♖xd3 e1=♗ 6. ♖xg4 ♖c1+ 7. ♖b4 [7. ♖xa4? ♖c4+ -+] 7...♖b1+ 8. ♖c4! [8. ♖c3? a3 9. ♖g8+ ♖c7 10. ♖a8 a2-+] ♖c2+ 9. ♖d4 [9. ♖c3? ♖e2+ -+] a3 10. ♖g8+! = [10. ♖xa3? ♖d1+ -+]

B) 1. ♖c1+ ♖b7 2. ♖xf4 [2. ♖fe1? f3 3.h5 (3. ♖c2 ♖d1 4.Rcxe2 fxe2 5. ♖xe2 ♖h1 6. ♖a3 (6. ♖c2 g3-+) 6...♖xh4 7. ♖xa4 ♖c6 8.e5 g3+ -+) ♖xe4 4.h6 (4. ♖c2 ♖a6-+) f2 5.h7 fxe1=♗ 6. ♖xe1 ♖e8 7. ♖a3 ♖h8-+] 2...♖d2+! [2...♖d1 3. ♖c7+ ♖b6 4. ♖f8 ♖d2+ 5. ♖a3 e1=♗ 6. ♖b8=+] 3. ♖a3! [3. ♖a1? ♖d1! -+] ♖d1 4. ♖c7+ ♖b6 5. ♖f8 ♖a1+! [5...♖xd6 6. ♖c1 ♖d1 7. ♖b8=+] 6. ♖b2! [6. ♖b4? e1=♗+ -+] e1=♗ 7. ♖b8+ ♖a6 8. ♖a8+ ♖b5 9. ♖b8+ =

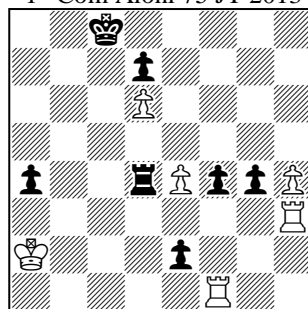
C) 1. ♖c3+ [1. ♖hh1? f3 2.h5 (2.e5 f2-+) ♖xd6 3.h6 ♖xh6-+] ♖d8 2.e5! [2.h5? ♖xd6 3. ♖e1 f3 4. ♖c2 f2-+; 2. ♖c2? f3 3. ♖e1 ♖xe4 4.h5 ♖e8 5.h6 ♖f7 6.h7 ♖g7 7. ♖h1 ♖e8-+] ♖e8 3.h5 [3. ♖cc1? f3-+] ♖d2+ 4. ♖a3! [4. ♖b1? ♖d1+ 5. ♖c1 ♖xg1-+] ♖d1 5. ♖c1 ♖xg1 6. ♖xg1 f3 7.h6 f2 8.h7 fxf1=♗ 9.h8=♗+ ♖f7 10. ♖f6+ = [10. ♖h7+? ♖e6-+]

Pavel Arestov, Russia 3rd HM Aloni 75 JT 2013



Draw b) ♖b8 → a7 5+5

Marco Campioli, Italy 1st Com Aloni 75 JT 2013



Draw 6+7
b) ♖h3 → d1 c) ♖f1 → g1

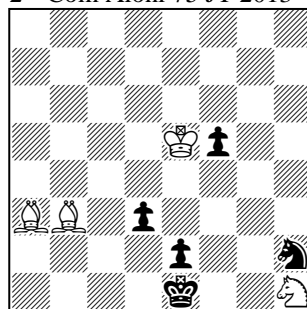
2nd Commendation: János Mikitovics, Hungary

White's slight material plus is in itself insufficient to ensure victory. Therefore, the activation of the white monarch is essential. White calculates his way in the utmost care, effectively implementing the pin-effect of the bishop pair.

In phase B, play is utterly different, because of a switch between a white bishop and knight. In our view, such changes harm the thematic connection between the two phases – something that was in the core of the thematic demand of this tourney.

In the absence of pin option by a bishop pair, here white must seek salvation based on maneuvers by his knight pair to stop the black promotion threats.

János Mikitovics, Hungary
2nd Com Aloni 75 JT 2013



Win 4+5
b) ♖a3=♗a3, draw

A) **1.♙f4!** [Thematic try 1..♗b4+? ♙f1! (1...d2? 2.♙f4 see main line) 2.♗g3+ ♙f2= (2...♙g2? 3.♙f4! ♗f3 4.♗d5+- pin) **1...d2** [1...♙f1 2.♗g3+ ♙f2 (2...♙g2 3.♗d5+++) 3.♗c5+!+!] **2.♗b4** pin **2...♗g4** **3.♗c2!** Once again it is forbidden to capture the defenseless f5 [3.♙xf5? ♗f2! 4.♗g3 ♗d3=; 3.♙f3? ♗e5+ 4.♙g2 ♗g6 5.♗c2 ♗f4+ 6.♙f3 ♗g6 7.♗a4 ♗e5+ 8.♙g2 loss of time; 3.♗g3? ♙f2=] **3...♗f6!** [3...♗f2 4.♗g3 ♗e4 5.♗xe4 fxe4 6.♙e3!+- (6.♗xe4? ♙d1=)] **4.♙f3 ♗g4!** [4...♗e4 5.♙g2 ♗c3 6.♗xc3+- (6.♗f2? d1=N!)=] **5.♗a4!** [5.♗b3? ♗e5+ 6.♙g2 ♗g6 7.♗c2 ♗f4+ 8.♙f3 ♗g6 9.♗a4 ♗e5+ 10.♙g2 loss of time] **5...♗e5+ 6.♙g2 ♗d3** [6...♗g6 7.♗b5 f4 8.♙f3=] **7.♗a5!** [Thematic try 7.♗c3? ♗b2!! (7...♗f4+? 8.♙f3 ♗g6 9.♗a5 ♗e5+ 10.♙g2+-; 7...♗c5? 8.♗c2+-) 8.♗b5 ♙d1! It is necessary to sacrifice the bN! (8...♗d1? 9.♗a5+-) 9.♗f2+ ♙c2!]=] **7...♗f4+** [7...f4 8.♗b3 ♗c1 9.♗c2+-] **8.♙f3 ♗e6!** [8...♗d3 9.♙e3 ♙f1 10.♗g3+-] 8...♗g6 9.♗b5+-] **9.♗b4!** [9.♗b5? ♗d4+=; 9.♙e3? f4+=; 9.♙g2? ♗f4+ 10.♙f3 ♗e6 11.♗b4 loss of time] **9...f4!** [9...♗c5 10.♗b5 ♗e6 11.♙e3 f4+ 12.♙e4! f3 13.♙e3!!+- (13.♙xf3? ♗d4+=)] **10.♙g2! ♗g5** **11.♗f2!** [11.♗c2? f3+= (11...♗e6? 12.♗d3+-)] **11...f3+ 12.♙g3!** [12.♙g1? ♗h3+ 13.♗xh3 f2+ 14.♗xf2 stalemate] **12...♙f1** [12...♗e6 13.♗e4+- Thematic try 13.♗b5? ♗d4 14.♗d3 ♗c6 15.♗c3 ♗d4! 16.♗a6 ♗f5+! 17.♙xf3 ♗h4+ 18.♙g3 ♗f5+ 19.♙g2 ♗h4+ 20.♙g1 ♗f3+ 21.♙g2 ♗h4+ positional draw; 13.♗c3? ♗d4 14.♗e4 f2 15.♗xd2+ ♙f1 16.♗b5 pin 16...♙g1!]=] **13.♗b5! ♗e4+** **14.♙xf3!** Only now can white capture the defenseless bP [14.♗xe4? d1=Q=] **14...d1=Q** **15.♗xd1+-**

B) **1.♗g3!** [1.♙f4? d2! (1...♗g4? 2.♗g3! ♙f2 3.♗xe2=) 2.♗c2+ ♙f1 3.♗e3+ (3.♗g3+ ♙f2+-) 3...♙g1+-; 1.♙xf5? ♙d2 2.♗b1+ ♙e3+-] **1...♗g4+** [1...♙f2 (d2) 2.♗xe2+-] **2.♙f4!!** [2.♙d4? ♙f2! (2...f4? (♙d2?)) 3.♗c2+!! (3.♗xe2? dxe2+-) 3...dxc2 4.♗xe2 f3 5.♗xc2! fxe2 6.♗d3=) 3.♗xe2 dxe2 4.♗c2 f4! 5.♗e6 ♗e3+-] **2...♙f2** [2...d2 3.♗xe2= (3.♗c2+? ♙f2 4.♗xe2 d1=Q+-)] **3.♗xe2** [3.♗c2? d2! 4.♗xe2 d1=Q+-] **3...dxe2 4.♗c2 ♗e3! 5.♗b4! ♗d5+** [5...♙f1 6.♗d3=; 5...♗g2+ 6.♙xf5 e1=Q 7.♗d3+ =] **6.♗xd5 e1=Q 7.♗d3+ =**