

וריאנטים 73 Variantim 73

December 2017

מקוריות: פתרונים והערות

Originals: Solutions & Comments

IRT judges: #2: Givi Mosiashvili (2017) #3: Zoran Gavrilovski (2016-7); #n: Viktor Volchek (2015-7); Studies: Ofer Comay (2017) H#: Valery Gurov (2017); S#: Petko Petkov (2017-8)
Fairies: Alexander Bulavka (2017)

Editors:

Orthodox: **Evgeni Bourd**
Fairies: **Michael Grushko**
Studies: **Ofer Comay**

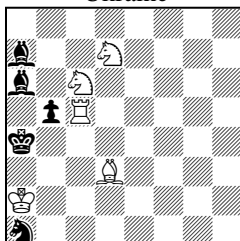
evgbourd@gmail.com
bargrushko@bezeqint.net
ofercomay@gmail.com

עורכים:

בעיות רגילות: יבגני בורד
בעיות אגדתיות: מיכאל גרושקו
סיומים: עופר קומאי

3011

Aleksandr Tsaplin
Ukraine



#2v

5+5

1. ♖b2? zz but 1... ♜b3!

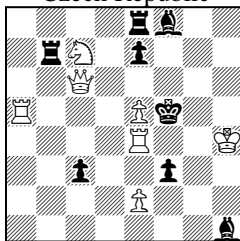
1. ♙c4! zz

1... ♙a7~ 2. ♜(x)b6# 1... ♙xc5 2. ♜xc5# 1... ♙a6~ 2. ♙xb5#

1...b5~ 2. ♞a5# 1... ♜a1~ 2. ♙(x)b3#

3012

Josef Burda
Czech Republic



#2

7+8

1. ♞g4! [2. ♖g6, e4, ♗e4, ♗e6#] [ABCD]

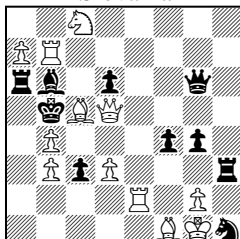
1... ♞xc7 2. ♖g6, e4# [AB] 1... ♞b6 2. e4, ♗e4# [BC]

1... ♞b5 2. ♗e4, ♗e6# [CD] 1... ♞b4 2. ♖e6, ♖g6# [DA]

The unique feature of this separation theme is that all four defenses are by the same black rook (PE)

3013

Jozef Havran
Slovakia



#2vv

12+10

1. ♞e3 **A?** [2. ♙xd6#] 1... ♗e6 b 2. d4 **C#** but 1... ♞h5 a!

1. ♞e4 **B?** [2. ♙e3, ♙f2, ♙xb6#] 1... ♞h5 a 2. d4 **C#** but 1... ♗e6 b!

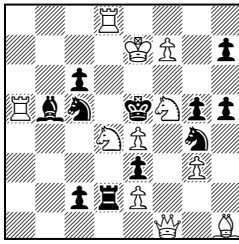
1. d4! [2. ♙xd6#]

1... ♗e6 b 2. ♞e3 **A#** 1... ♞h5 a 2. ♞e4 **B#**

(1... ♞a6~ 2. ♞xb6# 1...dxc5 2. ♗xc5# 1... ♗g8/g5/h5/f7 2. ♜xd6, ♞e3# 1... ♗f5/e4 2. ♜xd6#)

The Banny theme combined with reversal. The duals after 1... Qg5 & Qf7.g8 can be avoided by using a black bishop g6 instead of the queen. WPa2 can be moved to e7 and will provide the mate after 1...Be4. Bpf4 & g4 can also be removed now (PE)

3014
Valery Shanshin
 Russia

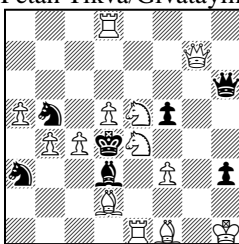


#2vv 11+11

1.♖a1 X ? [2.♜xc6 A #] 1...♞xd4 x 2.♞xd4# but 1...♜xe4 a!
 1.♜f~? [2.♞f5 B #] 1...♜d7 2.♜xc6 A # 1...♜h6 2.♞f6# 1...♜f2!
1.♜d6! [2.♜f3# (2.♞f5 B? ♞xd4!)]
 1...♞xd4 x 2.♞f5 B # 1...♜xe4 a 2.♜c4 Y # [2.♜xc6 A? ♞d5!] 1...♜xe2 y 2.♜xc6 A #
 1...♞xd4 2.♖a1 X # 1...♜h2 2.♞f6#
 Anti-Dombrovskis paradox Aa! - aY(A?) threat correction B - B?|B| flight giving key
 (Author)

The “anti-Dombrovskis” effect needs some explanation. In the set play we have 1...♜xe4 a 2.♜xc6 A # in the try 1.♖a1 ? threatening 2.♜xc6 A # the refutation is 1...♜xe4 a! making a Dombrovskis paradox. This is different in the solution: now 1...♜xe4 a 2.♜xc6 A doesn't work as d5 becomes available for the BK – this is the anti-Dombrovskis effect. A different mate is given, exploiting again the BB pin (PE)

3015
David Shtern
Evgeni Bourd
 Petah Tikva/Givatayim



#2* 13+7

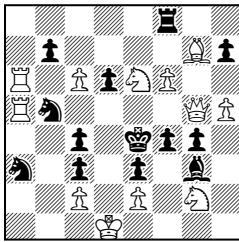
1...♜xc4 a, ♜xc4 b 2.♜c6 A# 1...♞d6 2.♜e3# 1...♜d6 2.♜c3#

1.♜d6! [2.♜c6 A#]

1...♜xc4 a 2.♜xb5# 1...♜xc4 b 2.♜xf5# 1...♞xd6 2.♞g1# 1...♜xd6 2.♞a7#

A nice Dombrovskis paradox with separation of mates on the captures on c4 in the solution. A total of close to four mate changes with pleasing long WQ moves (PE)

3016
Sergey Khachaturov
 Russia



#3 12+13

1.f7! [2.♜c5+ dxc5 3.♞e5#]

1...b6 2.♜c7 X [3.♞d5 A #] 2...♜xc7 3.♞f5 B #

1...♞d8 2.♜d4 Y [3.♞f5 B #] 2...♜xd4 3.♞d5 A #

1...f3 2.♞xe3+ ♞d5 3.♜c7 X # 2...♞f5 3.♜d4 Y #

Le Grand theme change mates (Author)

The return of the knight moves from the first two variations as mates in the third is nicely done. However, I think a better key can be achieved by placing WPf6 on f7 and WBg7 on d4. The key is now 1.Bg7, the cost is the need to add BQg3 (instead of the BB) and WPf2 to prevent cooks (PE)

3017
L. Lyubashevsky
L. Makaronez
 Rishon Lezion/Haifa



#3v 9+14

1.♜xg3? [2.♜xe3 + dxe3 3.♞h5# 2...♞e5 3.♞f5#]

1...♜f1 2.♞f3 + ♞c4 3.♜e5#

1...e2 2.♞xe2 ♜f3 3.♞e6 2...♜e4 3.♞f5#

1...d3 2.♞h1 + ♜f3 3.♞xf3# 2...♜e4 3.♞xe4#

but 1...♞f8!

1.d7! [2.♞d6+ ♞c4 3.♜e5#]

1...♜xe4 2.♜xe3 + ♞e5 3.♞f5#

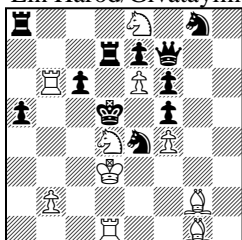
1...♜c4 2.♜xc3 + ♞xc3 3.♞f3#

1...♜f3 2.♞d3 ~ 3.♞d6#

1...♞c4 2.♜d6 + ♞d5 3.♞f5# 2...♞d3 3.♜e5#

The activity of the white knights connect the try and the solution (PE)

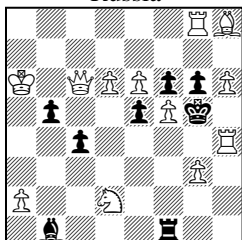
3018
Yitzhak Nevo
Evgeni Bourd
 Ein Harod/Givatayim



#3 10+11

1. ♖xc6! [2. ♖c2+ ♖c4 3. b3# 2... ♖xe6 3. ♖d8#]
 1... ♖xe6+ 2. ♖d4+ ♖d5 3. ♖b5#
 1... ♖c8 2. ♖e2+ ♖c4 3. ♖xa5# 2... ♖xe6 3. ♖d8#
 1... ♖h5 2. ♖xe7+ ♖xe7 3. ♖xf6# 2... ♖xe7 3. ♖d6#
 Very good key with black & white royal batteries firing (PE)

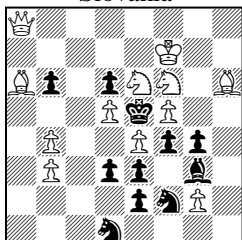
3019
Eugene Fomichev
 Russia



#3 12+8

1... ♖xf5 2. ♖f3! ♖xf3 3. ♖xf3#
 1... ♖xf5 2. ♖e4! ♖xe4 3. ♖xe4#
 Quiet sacrifices by wQ + mates with B,R- blocks on f5.
 1... ♖e4 2. ♖xe4 1... ♖xf3 2. ♖xf3 Captures by wQ.
 1. ♖d7! [2. ♖f7(g7)]
 1... ♖xf5 2. ♖xf6+! ♖xf6 3. ♖e7#
 1... ♖xf5 2. ♖xg6+! ♖xg6 3. ♖g7# Latvian Novotny with blocks on f5 + B,R-sacrifices.
 1... ♖e4 2. ♖xe4+ ♖xf5 3. e7#
 1... ♖f3 2. ♖xf3+ ♖xf5 3. e7# Captures by wS. Changed play in 4 variants with double changed theme. M. Adabashev's complex 2x2 in each phase.
 Also 1... ♖xf5 2. e7+ ♖g5 3. ♖g4# Captures by wS. Changed play in 4 variants with double changed theme. M. Adabashev's complex 2x2 in each phase.
 Four-fold change with good dual avoidance after the self-blocks on f5 (PE)

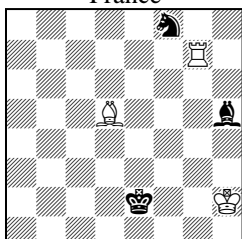
3020
Emil Klemanic
 Slovakia



#3 12+11

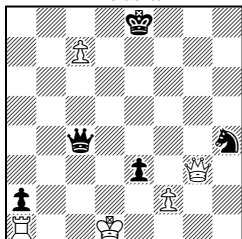
1. ♖g7? [2. ♖e8+ ♖xe4 3. ♖xd6#]
 1... f3 2. ♖h5+ ♖xe4 3. ♖xg3#
 1... ♖xe4 2. ♖xg4+ ♖xf5 3. ♖h6#
 but 1... ♖h4!
 1. ♖e8! [2. ♖c7+ ♖d4 3. ♖b5#]
 1... d2 2. ♖xf4+ ♖d4 3. ♖xe2#
 1... ♖c3 2. ♖d8+ ♖d4 3. ♖c6#
 Two Siers Batteries (Author)
 Unified play between try and solution (PE)

3021
Jean Carf
 France



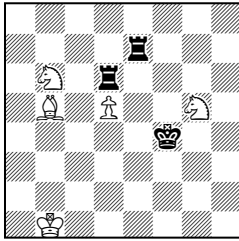
Win 3+3

3022
Pavel Arestov
 Russia



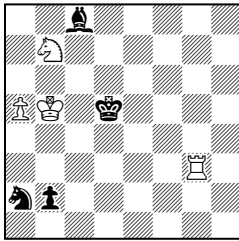
Draw B→ 5+5

3023
Michal Hlinka
Lubos Kekely
Slovakia



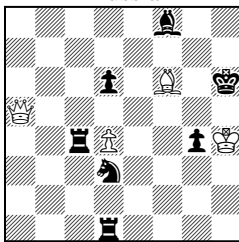
Draw 5+3

3024
Pavel Arestov
Daniel Keith
Russia/France



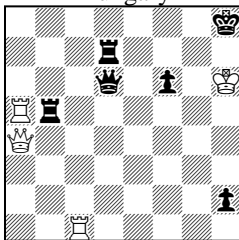
Win 4+4

3025
Anatoly Skripnik
Russia



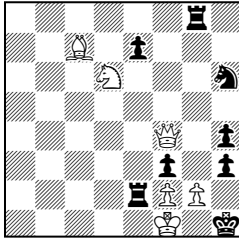
Draw 4+7

3026
Arpad Ruzs
Hungary



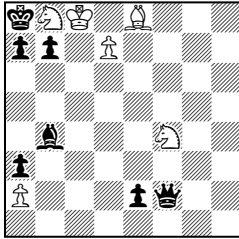
Win 4+6

3027
Peter Krug
 Austria



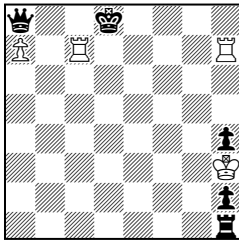
Win 6+8

3028
Yochanan Afek
 Netherlands



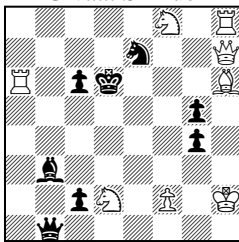
Draw 6+7

3029
Oleg Pervakov
 Russia



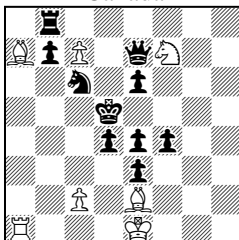
Win 4+5

3030
Amatzia Avni
 Givaat Shmuel



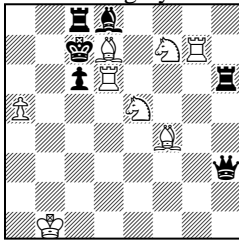
Win B→ 8+8

3031
Charles Ouellet
 Canada



Win 7+10

3032
Janos Csak
Hungary

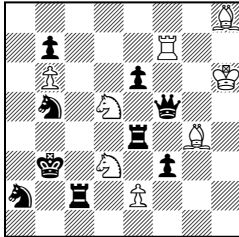


H#2 2.1.1.1 8+6

1. Rxd6 Qxd8 2. Rxd7 Qxc6#
1. Qxd7 Qxc6 2. Qxd6 Qfxd8#

In both solutions, WRd6 and WBd7 are captured, in a different order, ending with pleasing battery mates. The W moves are also reversed, adding much unity to the play. The question to be asked is whether WP's cannot replace the captured WR&WB (PE)

3033
Vitaly Medintsev
Russia

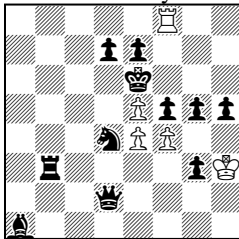


H#2 2.1.1.1 8+9

1. Qxf7 Qxe6 2. Qc4 Qe3#
1. Qxg4 Rxf3 2. Rec4 Qc5#

BQ hideaways that capture white pieces not participating in the solution. The BQ must move for line opening (PE)

3034
Daniel Papack
Germany

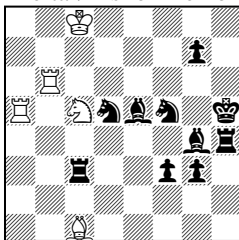


H#2 b) ♖f5→d6 5+11

a) 1. Q~? ?? 2. Qd5 exf5 1. Qe2?! Qg2 2. Qd5 exf5?? 1. Qf3! Qxg3 2. Qd5 exf5
b) 1. Q~? ?? 2. Qxe5 f5 1. Qf3?! Qxg3 2. Qxe5 f5?? 1. Qe2! Qg2 2. Qxe5 f5

Author: black correction for allowing a waiting move for white combined with dual avoidance: Black has to avoid a white pin in advance.

3035
Aaron Hirschenson
Shaul Shamir
Meitar/Rishon Lezion

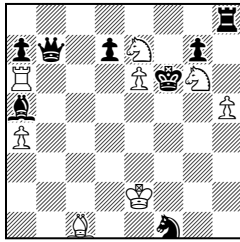


H#2 2.1.1.1 5+10

1. Qc7 Qe4 2. Qd4 Qxg3#
1. Qc7 Qe6 2. Qb4 Qxg7#

Author: Hideaways Black obstructions

3036
Menachem Witztum
Ricardo d. m. Vieira
 Tel Aviv/Brasil

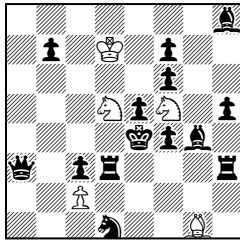


H#2 3.1.1.1 8+8

- 1.♙d2 ♖b6 2.♙g5 ♙b2#
 1.♜e3 ♜c6 2.♜f5 ♜d5#
 1.♞f8 ♞d6 2.♞f7 exd7#

Author: Thematic pieces :A – wTa6 ;B bDb7 Tactical effect : X : pieces A Effect X 1.Ld2 Tb6 Pieces A moves along the 6th row to be directly attacked by piece B (thus eliminating its influence over the mating line) 2.Lg5 Lb2# B (b) blocks B(w) mates Effect X 1.♜e3 Tc6 Pieces A moves along the 6th row to be directly attacked by piece B (thus eliminating its influence over the mating line) 2.Lg5 ♜d5# S (b) blocks S(w) mates Effect X avoided 1.Tf8 Tb6 Pieces A moves along the 6th row to avoid being attacked by piece B 2.Tf7 e d7# R (b) blocks R(w) mates

3037
Yossi Retter
 Jerusalem

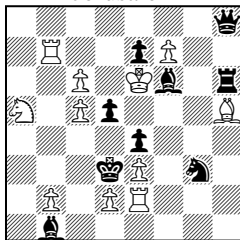


H#2 2.1.1.1 5+14

- 1.♙e2 (♙f3?) ♜g7 2.♞df3 ♜xf6#
 1.♞dg3 (♞df3?) ♜b4 2.♙f3 ♜d6#

Avoidance of self-obstructions by black. This is nicely combined with unpins and interferences (PE)

3038
Yossi Retter
 Jerusalem

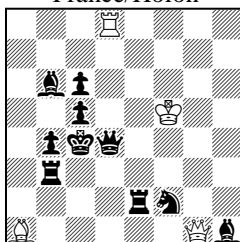


H#2 b)♞b7→d7 11+9

- a) 1.♙c2 d4+ 2.♙d3 ♖b3#
 b) 1.♙c2 ♙xd5 2.e5 ♙e6#

Beautiful! BK switchback in one solution and WK in the other and in both cases the kings open way to a pawn double-move that performs an interference of BBf6 (PE)

3039
Pierre Tritten
Emanuel Navon
 France/Holon



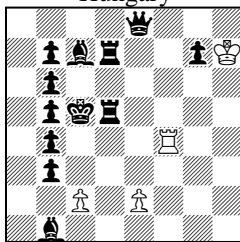
H#2 2.1.1.1 4+10

- 1.♙b2 ♖d2 2.♙c3 ♙c1#
 1.♙d6 ♙e5 2.♙d5 ♙g8#

A significant version of Pierre's 3rd Prize problem from the Sabra tourney at the Dresden congress. This is much more unified with interferences by both W line pieces and WQ mates (PE)

3040

Janos Csak
Hungary



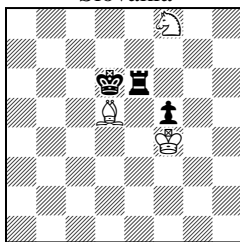
H#2.5 3.1.1.. 4+12

- 1...♖e4 2.♗7d6 c3 3.♘c6 cxb4#
 1...♗f5 2.♘c6 c4 3.♗5d6 cxb5#
 1...♗f3 2.♘c4 ♗d3 3.♗c5 cxb3#

Three echo mates by the WP which is unpinned in all three solutions by the WR (PE)

3041

Jozef Lozek
Slovakia



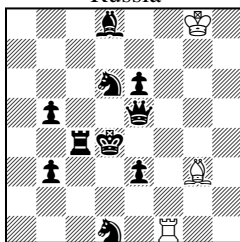
H#3 b) ♗f5→g7 3+3

- a) 1.♗e3 ♘g5 2.♙e5 ♗h4 3.♗f4 ♖g6#
 b) 1.♗e8 ♖d7 2.♙e7 ♖e5 3.♗f8 ♖g6#

Distant self-blocks and BK taking the place of a white piece (PE)

3042

Aleksey Ivunin
Alexandr Pankratiev
Russia



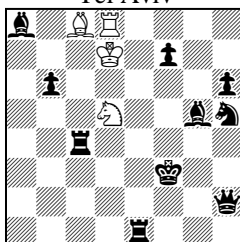
H#3 4.1.1.. 3+10

- 1.♘d5 ♗h4 2.♙e5 ♗xd8 3.♗e4 ♗f6#
 1.♙e4 ♗f5 2.♘d3 ♗xb5 3.♖e4 ♗e5#
 1.♙e4 ♗f2 2.♙f5 ♗h7 3.♙f6 ♗h4#
 1.♙c3 ♗xd1 2.♙b2 ♗xe5 3.♙a2 ♗a1#

The first two solutions show reasonable unity but after the 3rd solution I expected the 4th one also to show W battery play (PE)

3043

Ofer Comay
Tel Aviv



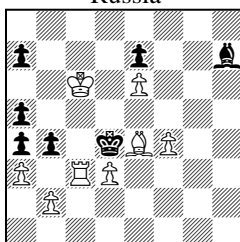
H#3 b) ♖d5→e6 4+10

- a) 1.♙e2 (1.♗c1? ♗c1?) ♙e8 (1...♗a6? 1...♙e7?)
 2.♗c1 (2.♗c1? 2.♙d1?) ♗a6+ 3.♙d1+ ♖e3#
 b) 1.♙g3 (1.♗h4? ♗h4?) ♙d6 (1...♗g8? 1...♙c7?)
 2.♗h4 (2.♗h4? 2.♙h3?) ♗g8+ 3.♙h3+ ♖f4#

A modern helpmate means unified dual avoidance play – and here this is done in the initial three moves. A perfect helpmate (PE)

3044

Valery Kopyl
Russia



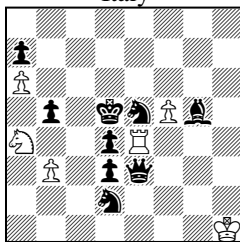
H#3 2.1.1.. 8+7

- 1.♗xe4+ ♙b5 2.♙d5 dxe4 3.♙d6 ♗c6#
 1.bxc3 ♙b7 2.♙c5 b4 3.♙b5 ♗c6#

Author: Zilahi Come-and-Go Mate on initial king square

3045

Francesco Simoni
Italy



H#3 2.1.1.. 6+9

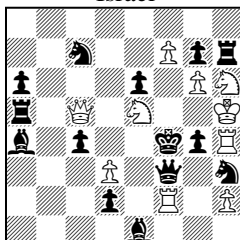
1. ♖h4 ♖b2 (♖c5?) 2. ♗h6 ♖c4 3. ♗c6 ♗xe5#
1. ♖f1 ♖c5 (♖b2?) 2. ♗c1 ♖e6 3. ♗c6 ♗xd4#

Two ways, black line opening with preventive interference to avoid a check, reciprocal dual avoidance for line closing, selfblock (author)

After a selfblock on c6 the question is where the white rook will give mate. Going through h6 (with anticipatory line closure to avoid check) white cannot place his knight on e6 and, reciprocally, going through c1 (with a similar anticipatory self-interference) the knight cannot be placed on c4. Very nice dual avoidance! (PE)

3046

Y. Retter E. Bourd
M. Erenburg
Israel



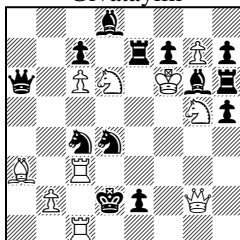
S#2 10+14

1. ♖exg4! [2. ♗e5 ♗xe5#]
1... ♗xf2 2. ♖e5+ ♗xh4#
1... ♖b5 2. ♗d4+ ♖xd4#
1... ♖d5 2. ♗e3+ ♖xe3#
1... ♖b5 2. ♗xc4+ ♖xc4#
1... ♖g5 2. ♗xg5+ ♗xg5#

The Dentist is hard at work, extracting three black pieces out of the battery (PE)

3047

Evgeni Bourd
Givatayim



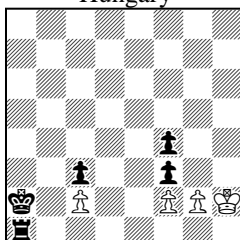
S#2vv 10+13

1. ♗g3? [2. ♗d3 ♖xd3#] but 1... ♖f3!
1. ♗f3? [2. ♗d3 ♖xd3#] but 1... e1=♖!
1. ♗g1! [2. ♗xd4 ♖d3#]
1... ♖c4~ 2. ♗e3 ♗xe3#
1... ♖e5! 2. ♖de4 ♖xe4#
1... ♖d4~ 2. ♖1c2 ♖xc2#
1... ♖f5! 2. ♖ge4 ♗xe4#

This excellent problem is described in length by the author in pages 20 to 26 of this issue (PE)

3048

Gyorgy Bakcsi
Hungary



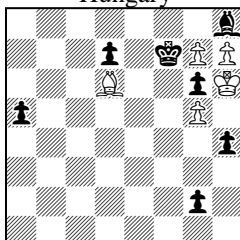
Ser-S#14 4+5

1. g4 2. g5 3. g6 4. g7 5. g8=♖ 6. ♖f6 7. ♖e4 8. ♖d2 9. ♖b1 10. ♖g1 11. ♖f1 12. ♖e1 13. ♖d1
14. ♖c1 ♗xb1#

A nice maneuver involving a knight promotion (WR promotion doesn't work as a3 must be guarded) and zugzwang mate (PE)

3049

Gyorgy Bakcsi
Hungary



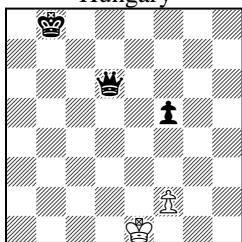
Ser-S#10 5+7

1. g8=♖ 2. ♖e7 3. ♖c6 4. ♖xa5 5. ♖c4 6. ♖e3 7. ♖xg2 8. ♖xh4 9. ♖f5 10. ♖g7 ♖xg7#

Again zugzwang at the end, but this time after promoting, capturing all free-to-moves BP's, the WS makes a switchback (PE)

3050

Janos Csak
Hungary



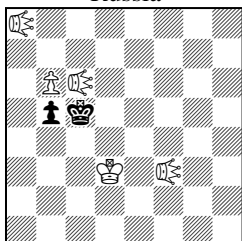
Ser-r#17 2+3

1.f4 2.♖f2 3.♙g3 4.♖h4 5.♙g5 6.♙xf5 7.♙g5 8.f5 9.f6 10.♙g6 11.♖f7 12.♙e8 13.f7
14.f8=♖ 15.♖f7 16.♖d7 17.♙d8 ♖f8#

A beautiful miniature – it is amazing that such an accurate sequence of moves can be achieved with only 5 pieces (PE)

3051

Vladimir Kozhakin
Russia



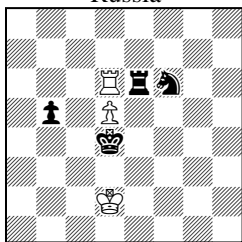
H#2 2.1.1.1 5+2
Take&Make
Leo ♘

1.♙xc6-b7 ♘d5 2.♙a6 ♘c6#
1.♙xc6-c1 ♘f1 2.♙d1 ♘h1#

The two Leo's, which move like a normal queen but to capture must hop like a lion, move along the h1-a8 diagonal to arrange the mates (PE)

3052

Vladimir Kozhakin
Russia



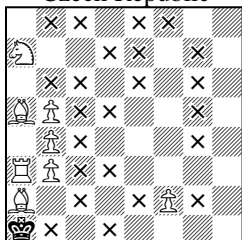
H#2 2.1.1.1 3+4
PWC

1.♙e5 ♙e3 2.♙xd5[+wPf6] + ♖xd5[+b♙d6] #
1.♖e5 ♖xf6[+b♙d6] 2.♙e4 ♖f4 #

In this type of circe the captured piece takes the place of the capturing piece. Note how in both solutions the BK cannot capture the WR as it will attack the king from its rebirth square (PE)

3053

Ivan Skoba
Czech Republic

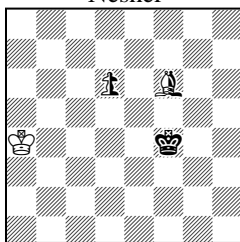


H#49.5 8+1
x = hole

1...♖a4 2.♙b2 ♖a3 3.♙c1 ♖a4 4.♙d2 ♖a3 5.♙e1 ♖a4 6.♙f1 ♖a3 7.♙g1 ♖a4 8.♙h2 ♖a3
9.♙h3 ♖a4 10.♙h4 ♖a3 11.♙h5 ♖a4 12.♙h6 ♖a3 13.♙h7 ♖a4 14.♙g8 ♖a3 15.♙f7 ♖a4
16.♙f6 ♖a3 17.♙e5 ♖a4 18.♙d6 ♖a3 19.♙c7 ♖a4 20.♙b7 ♖a3 21.♙a7 ♖a4 22.♙b7 ♖a3
23.♙c7 ♖a4 24.♙d6 ♖a3 25.♙e5 ♖a4 26.♙f6 ♖a3 27.♙f7 ♖a4 28.♙g8 ♖a3 29.♙h7 ♖a4
30.♙h6 ♖a3 31.♙h5 ♖a4 32.♙h4 ♖a3 33.♙h3 ♖a4 34.♙h2 ♖a3 35.♙g1 ♖a4 36.♙f1 ♖a3
37.♙e1 ♖a4 38.♙d2 ♖a3 39.♙c1 ♖a4 40.♙b2 ♖a3 41.♙xa3 f3 42.♙xa2 f4 43.♙xb3 f5
44.♙a4 f6 45.♙xb5 f7 46.♙a6 b5+ 47.♙a7 ♙b4 48.♙b7 ♙a3 49.♙c7 ♙c1 50.♙d6 ♙f4#

The idea is to place the BK on d6 and mate with the WB on the g1-b8 diagonal. To do this the BK must make long journey through the mine filed (holes to which it cannot step into), capturing WSA7 so that after going all the way back it can capture WPb5 and enable the end of the sequence. Amusing (PE)

3054
Semion Shifrin
 Neshher



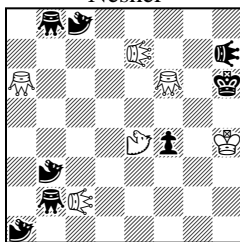
1. ♖f6-d8 ♗d8-c7 2. ♜f4-e5 ♔d6*c7 [♚c7->h8=♗] #
 1. ♗f6-e7 ♗e7*d6[♗d6->b7] 2. ♜f4-e4 [+ ♚c6] ♔c6*b7[♚b7->a8=♗] #

The principle here is that after the last capture of the neutral bishop, and promotion (to bishop) in the last, antisupercirce, move, any move by the BK will bring the neutral bishop to a square still attacking the king. The bishop promotion is needed to ensure this bishop cannot be moved by black (PE)

H#2 2.1.1.1 1+1+2

AntiSuperCirce
 ParrainCirce
 Neutrals ♚ ♗

3055
Semion Shifrin
 Neshher



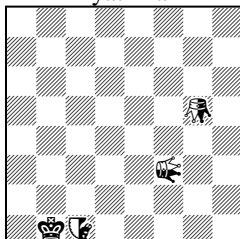
1. ♜e5 ♞f5 + 2. ♞c5 ♜xf6 3. ♜e6 + ♞g6#
 1. ♜ec7 ♜d6 2. ♜e6 ♞d7 3. ♜g6 + ♞e5#

Very subtle mates here. The mates are Madrasi-specific and are given by un-paralyzing the h7 Leo. This is done once by interfering with the line of the c7 Leo and in the second time by making the Leo that moved to c7 incapable of attacking h7. Very complex (PE)

HS#3 2.1.1.. 6+8

Madrasi
 Leo ♜ ♜ Nao ♞ ♞
 Grasshopper ♜ ♜

3056
Michael Grushko
 Kiryat Bialik



- a) 1. ♜a1 2. ♜g5-g1-b1 3. ♜f3-f1xb1 4. ♜b1-h1[+♜b1] ♜c1-c8-d6#
 b) 1. ♜g1 2. ♜xg1 3. ♜g1-h1[+♜g1] 4. ♜f3-f1-a1 ♜c1-c8-e4#

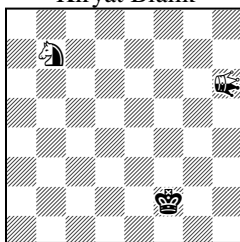
Amazing mating positions, it really takes a lot of time to understand this. This combination of fairy conditions seems quite successful (PE)

Ser-H#4 0+3+1

b) ♜b1→g2
 GhostChess
 PhantomChess
 Neutral: Lion ♜,
 nightrider ♜,
 Grasshopper ♜

3057

Michael Grushko
Kiryat Bialik



Ser-H#10 0+1+2

b) ♖b7→a5

GhostChess

PhantomChess

RelegationChess

Neutral: Lion ♁, knight ♞

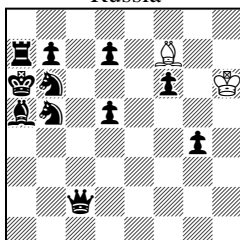
a) 1. ♖b7-g8-f6 2. ♞d5 3. ♞h6-h1-b7=♁ 4. ♁b5 5. ♁b4 6. ♁b3 7. ♁b2 8. ♁b2-b1=♁
9. ♁b1-d8xd5 10. ♁e3 ♁d5-d1-e1[+u♞d5] #

b) 1. ♖a5-b8-d7=♁ 2. ♁d5 3. ♞h1-b7=♁ 4. ♁b5 5. ♁b4 6. ♁b3 7. ♁b2 8. ♁b2-b1=♁
9. ♁b1-d8xd5 10. ♁e3 ♁d5-f5[+u♞d5] #

In RelegationChess pieces arriving back on their pawns' home rank are "relegated" – changed back to pawns. Here the neutral piece move to be relegated into a pawn just to be upgraded by promotion to queen. The mating positions, which use the PhantomChess condition (pieces can also move from their game-start position) are very compact. The mate of the 1st solution has a visible double check, and the ability of the neutral Q to move also from d1 covers all the other squares around the BK. In the 2nd solution, the mate is very subtle: the d5 pawn mate through e2 and moving the neutral pawn to any other square (by black) doesn't change anything. As before, the Q covers all squares also from d1 (PE)

3058

Anatoly Steopochkin
Russia



H#2 b) ♖f7=♖ 2+11

Circe

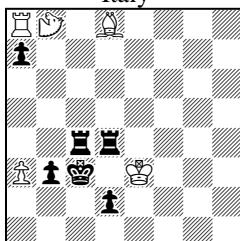
a) 1. ♖c8 ♞g8 2. ♖xg8[+w♞f1] ♞xb5 #

b) 1. ♖a8 ♖f8 2. ♖xf8[+w♖a1] ♖xa5#

Why not 1. ♖c8 ♞e8 etc or in the twin 1. ♖e4 ♖e7 etc ? because after ♞xb5 the BS must not be able to get back to g8 and after ♖xa5 the BB must not be able to get back to f8. Very nice (PE)

3059

Valerio Agostini
Gabriele Brunori
Italy



H#2.5 2.1.1.. 5+6

Nao ♞

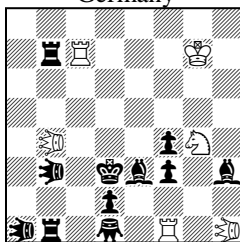
1... ♞a6 2. ♖b4 ♖c8 + 3. ♖c4 ♞f6#

1... ♞h5 2. ♖f4 ♞f6 + 3. ♖d4 ♖c8#

The 1st BR move is to a square that creates a hurdle for the Nao, aimed at guarding a square. Good unity overall (PE)

3060

Franz Pachl
Dieter Müller
Hubert Gockel
Germany



H#2 3.1.1.. 6+11

Equihopper ♞♞

Grasshopper ♞

1. ♖xb4 ♞f6! (♖e1?) 2. ♖d4 ♖f2#

1. ♞xg4 ♖e1! (♞h2?) 2. ♞e4 ♞f2#

1. ♞xf1 ♞h2! (♞f6?) 2. ♞e2 ♞f2#

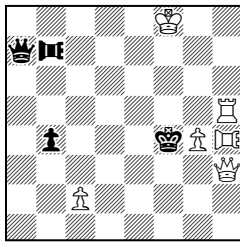
Cyclic Zilahi with cyclic dual avoidance. The dual avoidance strategy is different and subtle in each solution, but the overall impression is of unity and harmony (PE)

3061

Raffi Ruppin

Klaus Wenda

Rehovot/Austria



S#6

6+4

AntiCirce

Rook Lion ♖♜

1. ♖e3+? ♜xe3(♜d8)+ 2. ♜f7(♜g7)!

1. ♜e8+ ♜e4 2. ♜d8+ ♜d4 3. c3+ bxc3(c7) 4. ♜e8+ ♜e4 5. ♜f8+ ♜f4 6. ♖e3+ ♜xe3(♜d8)#

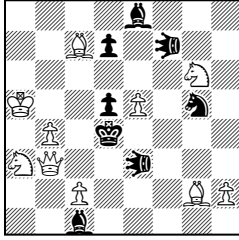
Lovely switchback, done to bring the BP to c7, activating the rook-lion and enabling the mate (PE)

3062

Paz Einat

Evgeni Bourd

Nes Ziona/Givatayim



#2* 10+8
Double-grasshopper ♖♜

1... ♖e3 a 2. ♘b5 **A** # 1... ♜f7 b 2. ♙b6 **B** #
 1. ♘a6 ! [2. ♚d3#]
 1... ♜e3 a 2. ♙b6 **B** # 1... ♜f7 b 2. ♘b5 **A** #

Reciprocal changes based on line effects of the double grasshoppers. In the set play Sb5# is impossible as it exposes the WK to ♜e3 that jumps to c5 and over b5 to a5. Similarly, ♙b6# exposes the WK to ♜f7 that jumps to c7 and over b6 to a5. The key, placing the WK in a different square, reverses the mates. Now immediate Sb5# is made impossible due to ♜f7 that jumps to c4 and over b5 to a6. Similarly, immediate ♙b6# is impossible due to ♜e3 that jumps to e6 and over b6 to a6 (authors)